

SHPro

The SHPro gives you the ability to network and web enable two serial legacy devices and monitor your environment, with one small network appliance. The SHPro is very easy to configure and you can have it operational in minutes. With its internal web server, the SHPro requires no software and is platform independent.



Alerts- E-mail, Paging, SNMP Traps

The SHPro can e-mail or page you. Also you can send SNMP traps to up to ten different locations.

Temperature and Humidity

The SHPro includes a temperature and humidity sensor. There are four additional external sensor ports.

Trending, Graphing, Reporting

The SHPro has on-board graphing capability and we include our MIB so you can use SNMP to poll for thresholds and limits. For additional analysis, our optional Overtime software can help build databases, create custom graphs, and export data in CSV.

Serial Capabilities 2 Ports

Console Access: The SHPro saves valuable cabinet and server room space and provides convenient access to the console ports on the machines that it serves.

Network-Enabler: A legacy serial device can be network-enabled by connecting its RS-232 port to the SHPro. A host (such as a PC) connects to the SHPro through the network with Telnet or with a raw TCP connection. The serial device can now be monitored and/or controlled from the host. Any data entered at the host is sent to the serial device and any data from the serial device is sent to the host.

Proxy SNMP Agent: The SHPro can be programmed to parse input data from a serial device and to form it into a user-defined SNMP MIB. The SHPro can then be queried by one or more network management stations (such as HP OpenView) to retrieve the data. The SHPro can also send SNMP traps to alert users of abnormal operating conditions.

Serial-Line Extender: An SHPro can make a network connection to another SHPro to act as a serial-line extender.

LAN-to-LAN Connector: Two SHPro can be connected via their RS-232 ports to serve as a link between two separate LANs.

The SHPro's four external sensor ports allow you to add any of the following optional sensors: Temperature, Humidity, Water, Voltage, Airflow, and/or Dry Contact Switch*

Features:

- Requires no software
- Four user defined threshold settings
- On board graphing capability
- Sends e-mail notifications
- Sends SNMP traps to 10 destinations
- Supports SNMP polling
- Supports DHCP
- 2 levels of password protection
- Internal web server
- 0U and 1U rack mountable
- Fully compliant with all operating systems
- Includes easy to read documentation and helpful utilities
- Free trial version of OverTime
- MIB integrates with all popular NMS
- 1 year limited warranty
- Free technical support via e-mail

Software:

Network Protocols ARP: RFC 826

- DHCP: RFCs 2131, 2132
- DNS: RFCs 1034, 1035
- ICMP: RFC 792
- IP: RFC 791
- PPP: RFCs 1332, 1661, 1662
- RARP: RFC 903
- RIP: RFC 1058
- SLIP: RFC 1055
- TCP: RFC 793
- UDP: RFC 768

Network Management SNMP/MIB-II: RFCs 1155, 1157, 1213

Terminal/Printer Applications LPD: RFC 1179

- Rlogin: RFC 1282
- TELNET: RFCs 854-861, 1079, 1091, 1372

Hardware

Processor: 68HC000

Ethernet Coprocessor: SMC91C96

Memory RAM: 128 KB with 2 KB NVRAM, EPROM: 256 KB

LED Status Indicators: Power, Link Integrity, and Network Ability

Network Interface RJ-45 10BASE-T connector IEE 802.3/ Ethernet compliant

Terminal Interfaces: (2) RS-232C, RJ-45 connector; accepts 4-, 6-, 8-pin plugs.

- 50 to 115,200 bps
- Full Modem Control
- Hardware and software flow control

4 Sensor Ports, RJ-45 connectors

Agency Power Supply: UL listed CSA approved (or per country)

- SH-Pro: FCC Class A, CE*

*All Specifications are subject to change without notice.

Physical Characteristics

- Height: 1.75 inches
- Width: 19 inches
- Depth: 4.75 inches
- Weight: 16 ounces

External Power Supply Style

- Wall-mount
- Input: 120 VAC, 60 Hz (or per country)
- Output: 9VDC, 500 mA, unregulated

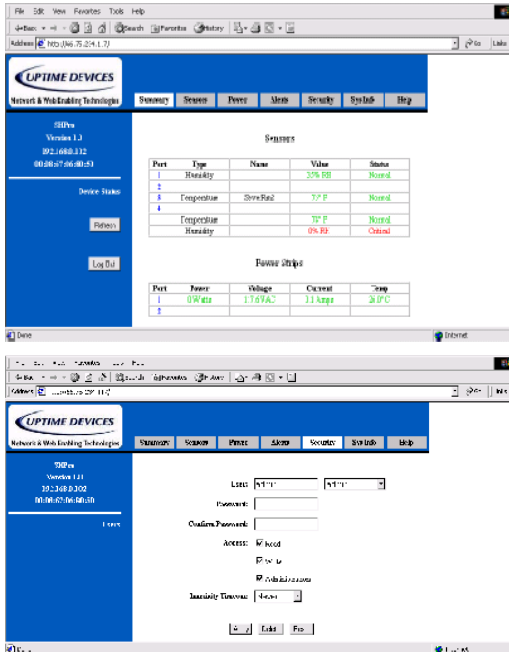
Environmental Temperature

- 0 to 50 degrees C operating
- -10 to 70 degrees C non-operating
- Humidity: 10 to 95 percent non-condensing

*The external sensor port supports most two-wire, on/off, or open/closed type sensors.

SHPro

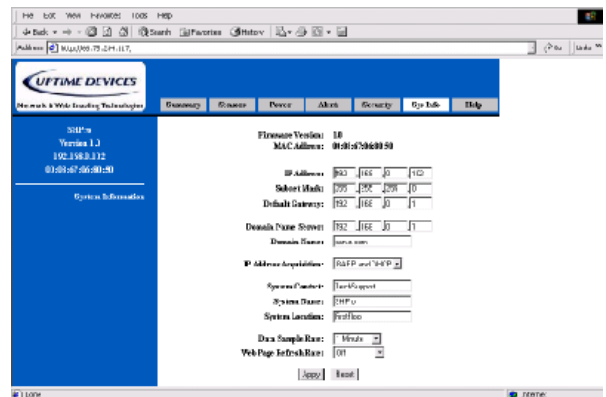
Network and Web Enable Environmental Monitor Monitor and Manage in Real-Time



1.1 SHPro Summary View shows the data provided by the sensors plugged into your device.

1.2 SHPro Security Screen gives you the ability to change your administrative information for your SHPro.

1.3 SHPro System Info Screen allows you to configure your SHPro's network settings.



1.4 SHPro Sensor View gives you a detailed description of the sensors in your device and allows you to change the settings for them.

