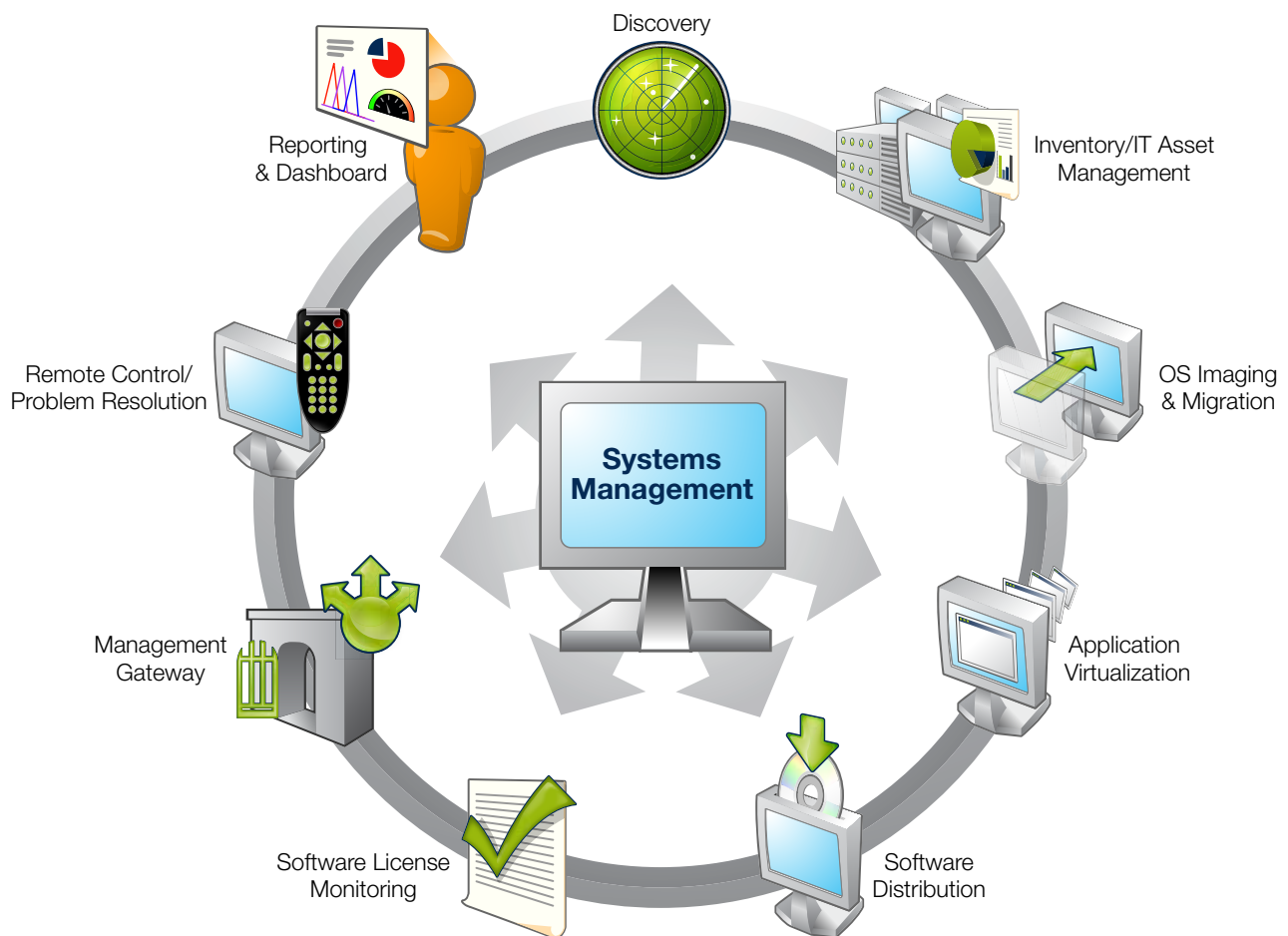


A photograph of two men, one younger and one older, both smiling and looking at a laptop on a desk. The man on the left is pointing at the screen. They are in an office setting with a window in the background.

LANDesk® Management Suite

See, Manage, Update, Protect

See, Manage, Update and Protect All the Devices in Your Network Environment from a Single Console



"LANDesk® Management Suite is an invaluable tool to us. We save a lot of time and transport costs, and at the same time we have been able to assist the users much better than before. LANDesk has improved the image of the IT department both in the management team and among the employees."

— **Torben Christensen**
IT Manager
Eurofins

A Single Console for Seeing, Managing, Updating and Protecting Enterprise IT Systems

Your enterprise is faced with the business pain of maintaining security and compliance while keeping pace with regulatory and technological changes. Your IT staff must constantly manage new security threats and patches, updates and innovations. And the success of your business depends on IT's ability to establish and maintain control in the face of constant change.

LANDesk® Management Suite: Relief in a Single Console

LANDesk® Management Suite lets your IT staff automate systems management tasks. No management solution is more complete, more integrated or easier to use, whether your systems are inside or outside the corporate firewall, or at one location or many.

LANDesk Management Suite helps:

- Increase efficiency and save time with a complete hardware and software management solution for all the systems and users in your complex network environment.
- Support users in any networked environment securely and easily, reducing costs and the demands on help desk resources.
- Protect user productivity and reduce resource needs by keeping pace with patches and updates and maintaining system-level security.
- Save time and network bandwidth with patented, ultraefficient and fault-tolerant software distribution technologies.
- Decrease software licensing costs and quickly respond to audits with comprehensive software license monitoring capabilities.
- Boost efficiency and save time by easily migrating users and their profiles to new operating systems.

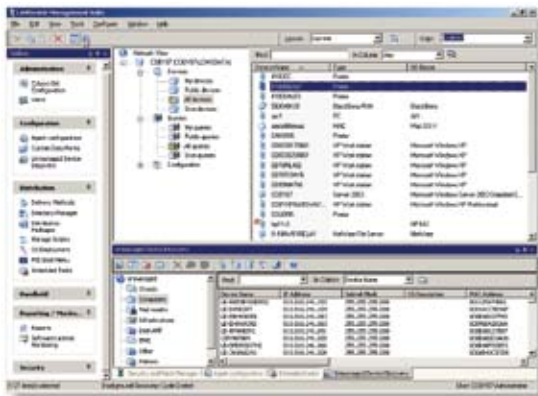
LANDesk Management Suite lets you do all this while leveraging your existing investments in database, application and directory service technologies. And it works across heterogeneous IT environments for minimal impact on your network, servers and personnel.

Increase Efficiency and Save Time

LANDesk® Management Suite helps you increase efficiency and save time by giving you anytime, anywhere control over the desktops, notebooks, servers and mobile devices in your networked environment. Easily discover the computer assets you have, how they're configured and where they are on your network—whether or not they are managed or have a firewall enabled. Even discover and manage systems outside the corporate firewall and at distributed sites with LANDesk® Management Gateway and an Internet connection—no VPN required.

Advanced management technologies give you the capabilities you need to take control of each system's configuration, standardize it and maintain it easily, efficiently and automatically.

A fully customizable console lets your IT team create task-optimized views and limit access to console features based on users' roles. You can even integrate with Active Directory to assign roles. Administrative users only receive rights to what they need, so everyone wastes less time, is more efficient and overall security and efficiency is maximized.



With LANDesk® Management Suite, easily discover the computer assets you have, how they're configured and where they are on your network—whether or not they are managed or have a firewall enabled.

Exclusive technologies—LANDesk® Dynamic Preferred Server, LANDesk® Targeted Multicast™ technology and LANDesk® Peer Download™ technology—give your enterprise the power to deploy packages, software and operating systems fast and efficiently. Policy-based maintenance with minimal network impact simplifies and speeds deployments while eliminating much of the need for dedicated hardware or specialized configurations. And LANDesk Dynamic Preferred Server provides functional load balancing and fault tolerance for enterprise package distribution that eases the burden of distributing packages to users that move from location to location. You can keep up with users no matter where they are or how often they move around.

Intelligent, Efficient Management of Growth

LANDesk® Management Suite lets you scale your systems management solution to meet your needs today and in the future. So regardless of how many users and sites you manage, you remain efficient and cost-effective.

What's more, you can centrally manage tasks across your enterprise. Rather than creating the same task over and over on multiple servers that manage different users or groups of users, you can simply create the task once on a central rollup server. The LANDesk® Global Scheduler automatically knows which systems belong to which servers and rolls out needed tasks to the necessary servers. Status is then reported back to the rollup server so your administrator maintains complete visibility of progress without taking a step.

Public queries, packages and delivery methods are all controlled and replicated at one location, from one server. And scheduled tasks and packages are easily grouped in the console to simplify the task of managing hundreds of different items. And when your users are moving from location to location, LANDesk® Dynamic Preferred Server automatically selects the most efficient way to deliver packages to that user.

LANDesk Management Suite is also built to support Windows PE (the standard for Microsoft Vista deployment) and Linux PE, so you can receive 32-bit performance for up to three times the speed of DOS-based imaging. You can even purchase your Windows PE licenses directly from LANDesk. Managing for growth and for existing distributed enterprise networks doesn't get any easier.

Realize a Rapid Time to Value and Decrease Ongoing Costs

Realizing a rapid time to value is critical to smart business practices. And according to a 2004 survey conducted by IDC (Quantifying the ROI Benefits of Integrated Systems Management), on average, an organization can recoup its investment cost for LANDesk® Management Suite in just 90.5 days and enjoy an average return on investment of 846% over three years.

LANDesk Management Suite makes realizing a rapid time to value and reducing ongoing costs possible by letting you automate routine tasks and perform those tasks with minimal impact on both your human and IT resources. You can get more done in less time and with less effort and infrastructure—and therefore, lower costs.

With enterprise scalability and the LANDesk® Management Gateway appliance, LANDesk Management Suite gives you the agility to manage users regardless of the size of your enterprise or the location of your users. LANDesk Management Gateway lets you manage and secure systems outside the firewall just like you manage those inside the firewall and with only an Internet connection. So you avoid the cost of a dedicated leased line or VPN infrastructure.



"With LANDesk® Management Suite, inventory is automatically updated daily. The cost savings of that feature alone have saved us thousands of dollars. We are able to manage our licenses better and compliance is no longer an issue."

— Anthony Cocco

Manager of IT Operations
North Penn School District

Protect Productivity

LANDesk® Management Suite lets you easily identify system vulnerabilities and quickly deploy applications or utilities to protect each computer in your environment—and the productivity of each user. You can also migrate users to new operating systems with automated OS deployment and profile migration tools, create policies to install or remove software and quickly perpetuate those policies to maintain configuration standards.

Efficient, automated control over your IT environment helps your enterprise more easily adapt to new technologies and applications and respond more quickly to problems and threats. Knowing what you have and controlling how it's configured removes uncertainty and eases the pain of IT systems management.

You can make informed decisions on software purchases and upgrade and hardware replacement needs with powerful query tools that let you quickly analyze and understand your IT environment. And you can easily show your progress toward corporate objectives, demonstrate compliance with IT standards and plan for future enhancements with extensive business reports and a report designer.

It all works together, from a single console, to protect your productivity, increase efficiency, save time and reduce costs for your entire enterprise.

Access the Control You Need, When You Need It

Choose how and when to extend your systems and security management control with LANDesk's line of integrated solutions. Whether you start with one solution or several, they all work together seamlessly to give you a single, intuitive management interface and the ability to add solutions at any time.



"It is an elegant solution that required a modest effort to build and saves us about eight hours work for each software distribution we do. Achieving anything that even remotely resembles this in Windows only would take us at least a man-year."

— Micke Johansson
Technical Design Authority
Fujitsu Sweden

	LANDesk® Management Suite	LANDesk® Security Suite	LANDesk® Antivirus	LANDesk® Patch Manager	LANDesk® Asset Manager	LANDesk® Server Manager	LANDesk® Systems Manager	LANDesk® Process Manager
Hardware and software management of complex networked environments	■							
Secure management over the Internet	■	■				■		
Basic core vulnerability detection technology	■	■		■		■		
Active endpoint security and patch management		■						
Enterprise-ready antivirus protection			■					
Antivirus enforcement for McAfee, Norton, Sophos, Symantec and Trend-Micro		■	■					
Automated vulnerability assessment, remediation and ongoing patch management		■		■				
Visibility and tracking of computer resources	■				■			
Visibility and tracking of computer and non-computer resources					■			
The ability to instantly assess the health of servers and keep them available and running at high performance levels						■		
Real-time, component-level performance monitoring and health maintenance for individual systems							■	
The ability to design, model, document, automate and optimize all your business processes and/or to execute workflows and automate processes for LANDesk® software distributions, patch management, vulnerability scans and software license monitoring								■

NOTE: LANDesk® Management Suite includes the functionality of LANDesk® Inventory Manager and LANDesk® Handheld and Embedded Device Manager, either of which can be used alone or upgraded to LANDesk Management Suite's full capabilities. LANDesk® Security Suite includes the functionality of LANDesk® Patch Manager, which can be used alone or with LANDesk Management Suite or upgraded to LANDesk Security Suite's full capabilities. LANDesk® Asset Manager and LANDesk® System Manager can be added on to LANDesk Management Suite. LANDesk® Antivirus can be added on to LANDesk Management Suite or LANDesk Security Suite.

Key Features

Enterprise Efficiency and Scalability

- Centrally manage tasks by distributing tasks to each system's local core server automatically.
- Reduce repetition by replicating public queries, packages and delivery methods across enterprise servers.
- Manage tasks and packages with grouping capabilities within console logs.
- Access intelligent, location-aware Dynamic Preferred Server for enterprise package distribution that offers functional load balancing and fault tolerance.
- Access inventory service performance that's up to 30% more efficient, and which can use between one and eight threads.
- Offload data collection and insertion to a non-core server for increased efficiency.
- Access support for Oracle Database 10g and Microsoft SQL 2005 among others.

Software License Monitoring

- Scan for known and unknown applications and define and track previously unknown applications.
- Keep unauthorized software from running—even on computers not connected to the network and even if end-users rename the file.
- See comprehensive software license use with application usage, license reporting and compliance reporting.
- Gain greater control over the software in your enterprise, with the ability to deny application launch for specific groups of machines or users.

Software Distribution

- Access intelligent, location-aware distribution capabilities.
- Improve efficiency with a task-based model that separates package building and delivery method.
- Distribute large packages to multiple users with minimal bandwidth and without dedicated hardware or router reconfigurations.
- Use local bandwidth efficiency to access packages already delivered to a subnet.
- Install multiple packages in a single operation and automatically install prerequisite packages with prerequisite checking and package chaining.
- Easily select targets with a task scheduler that integrates with directory service and asset inventory databases.
- Deploy any package type with package-agnostic distribution and access multifile MSI support.
- Experience greater flexibility in the software packages you distribute. The LANDesk® Software Deployment Portal gives you quick access to new packages available for distribution in a customizable, easy-to-view user interface.
- Deploy multiple software packages in a single policy and make that same package available for future updating and reapplication if necessary.

OS Deployment and Profile Migration

- Perform OS deployment and organize OS configurations more efficiently with an OS deployment tool.
- Provision "bare-metal" machines using PXE proxy technology.
- Capture user and application settings, desktop settings and user data with automated profile migration.
- Deploy disk images from any imaging tool.
- Complete post-image configuration with automated SYSPREP.
- Deploy applications automatically.
- Access support for Windows PE and Linux PE for imaging up to three times faster than DOS-based imaging.

Remote Control

- Centralize management and boost performance with central, console-based control over role-based administration rights.
- Improve performance and prevent conflicts with an application-layer agent that hides when unused.
- Increase efficiency with optimization for slow bandwidth conditions and dial-up connections.
- Perform maintenance and repairs any time with remote wake, remote reboot and remote application launch.
- Obtain rapid problem resolution and reporting along with a full audit trail using integrated chat, bidirectional file transfer and automatic session logging.
- Support anyone on the network from any computer with browser-based capability.
- Experience greater flexibility by operating from your platform of choice. Remotely manage Macs from a Macintosh system without having to jump from console to console.

Inventory Management

- Realize a scalable discovery process for real-time subnet-level tracking of unmanaged networked devices with LANDesk's extended device discovery, even if those devices have a firewall enabled.
- Easily plan upgrades and respond to audits with detailed hardware and software inventories, custom data fields and software usage monitoring.
- Enjoy a complete view with detailed asset tag and serial number information, embedded pointing device, fixed drive and CD-ROM data.
- Access a reporting dashboard and publish reports to a file share in HTML, PDF, DOC, RTF or XLS formats.
- Access inventory service performance that's up to 30% more efficient and includes the option to use between one and eight threads.
- Offload data collection and insertion to a server other than the core for increased efficiency.
- Use bandwidth efficiently with automatic unmanaged device discovery (UDD), agentless inventory and delta inventory scans with compression.

Handheld, Embedded and Wireless Device Management

- Enjoy complete inventory management and asset discovery, monitoring and change control alerting for handheld, embedded and wireless devices.
- Access efficient software distribution with checkpoint and integrated task scheduling to define, schedule and automate software deployments.
- Achieve less bandwidth-intensive handheld, embedded and wireless device management with bandwidth throttling.
- Enjoy push and pull file transfer capabilities.

Intel® vPro™ Support

- Perform out-of-band discovery on Intel® vPro™-based hardware and software assets.
- Remotely heal Intel vPro-based systems regardless of OS or system state.
- Redirect screen output and use boot redirection to repair non-responsive systems.

Enterprise Control

- Agent watcher restarts a downed agent, restores a renamed agent to its original state and alerts your IT team if an end user removes or tampers with the agent—so IT stays in control and end users can't wreak havoc.
- Maintain control of your enterprise from a single view with enterprise alerting that keeps the most important information in one easy-to-view section for greater accessibility.

Visit www.landesk.com for more information.

This information is provided in connection with LANDesk products. No license, express or implied, by estoppel or otherwise, or warranty is granted by this document. LANDesk does not warrant that this material is error free, and LANDesk reserves the right to update, correct or modify this material, including any specifications and product descriptions, at any time, without notice. For the most current product information, visit www.landesk.com.

Copyright © 2007 LANDesk Software Ltd. or its affiliated companies. All rights reserved. LANDesk, Peer Download, Targeted Multicast and Trusted Access are registered trademarks or trademarks of LANDesk Software Ltd. or its affiliated companies in the United States and/or other countries. Other names or brands may be claimed as the property of others. Each customer's results may vary based on its unique set of facts and circumstances. LSI-0669E 1107/BB/NH

